

TeeJet SPRAY GUNS



AA43L-AL-6 (with 1/2" fpt input) \$ 140.16
AA43H-AL-6 (with 1/2" fpt input) \$ 140.16

AA43 GunJet

Designed and built for heavy duty service. Stem extends through extension to valve seat located directly behind orifice disc for drip-free shutoff and instant operating response. Convenient trigger-lock for continuous spraying.

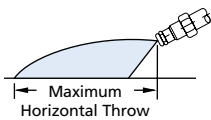
- Number AA43L for operating pressures up to 200 PSI.
- Number AA43H for operating pressures up to 800 PSI.
- Trigger handle control: ALL MODELS have 1/2" NPT or BSPT (F) inlet connections.

Type D Discs
D1,1.5,2,10,12,
14,16 \$ 1.44

Hardened Stainless Steel Type D Orifice Discs

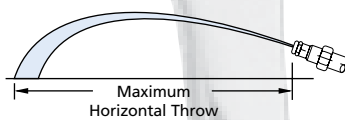
Choice of five interchangeable orifice disc capacities. Other sizes on request. Discs are corrosion- and erosion-resistant.

SETTING "A"
WIDE ANGLE CONE SPRAY



As trigger is drawn back, valve moves from shutoff position to initial wide angle spray, to continuously narrower cone sprays, to

SETTING "C"
STRAIGHT STREAM SPRAY



final straight stream. Knurled ring behind trigger is adjustable to stop trigger at any desired position.



AA43L-6 Brass \$ 168.70
AA43H-6 Brass \$ 168.70

Type 43L & 43H GunJet Spray Guns

MODEL NUMBER	OPERATING PRESSURE RANGE (PSI)	MATERIAL	LENGTH (INCHES)
AA(B)43L-AL	Up to 200	Aluminum	22
AA(B)43H-AL	200-800	Aluminum	22

(B) = BSPT

AA43LA-AL6 (with 1/2" fpt input) \$134.25
AA43HA-AL6 (with 1/2" fpt input) \$134.25

List Price
Please Apply Discount

Hardened Stainless Steel Type DX-HSS Spray Tips

For spraying trees and other applications where maximum spray throw is required. Write for Data Sheet 6990.

Type 43A GunJet Spray Guns

MODEL NUMBER	OPERATING PRESSURE RANGE (PSI)	MATERIAL	LENGTH (INCHES)
AA(B)43LA-AL	Up to 200	Aluminum	13
AA(B)43HA-AL	200-800	Aluminum	13

(B) = BSPT

AA43LC-1/2 \$135.66
AA43HC-1/2 \$135.66

Type 43LC-1/2 & 43HC-1/2 and GunJet Spray Guns

Types 43LC-1/2 and 43HC-1/2 have 1/2" NPT (F) outlet connections. Inlet connections are 1/2" NPT or BSPT (F).

MODEL NUMBER	OPERATING PRESSURE RANGE (PSI)	MATERIAL	LENGTH (INCHES)
AA(B)43LC-1/2	Up to 200	Brass	8
AA(B)43HC-1/2	200-800	Brass	8

(B) = BSPT

GUNJET NUMBER	ORIFICE DISC NUMBER	PERFORMANCE	L Series Gunjets						H Series Gunjets			
			40 PSI		100 PSI		200 PSI		400 PSI		800 PSI	
			A	C	A	C	A	C	A	C	A	C
AA(B)43L-AL2 AA(B)43H-AL2	D2	Capacity - GPM	.29	.30	.45	.47	.64	.66	.90	.94	1.3	1.3
		Max. Vert. Throw - ft.	—	22	—	22	—	23	—	24	—	26
		Max. Horiz. Throw - ft.	10	32	10	33	10	34	10.5	35	11	35
AA(B)43L-AL4 AA(B)43H-AL4	D4	Capacity - GPM	.60	.61	.92	.94	1.3	1.3	1.8	1.9	2.6	2.7
		Max. Vert. Throw - ft.	—	26	—	27	—	28	—	30	—	32
		Max. Horiz. Throw - ft.	10	36	10	36	10.5	37	11	39	11	40
AA(B)43L-AL6 AA(B)43H-AL6	D6	Capacity - GPM	1.2	1.3	1.9	2.0	2.7	2.9	3.8	4.1	5.3	5.8
		Max. Vert. Throw - ft.	—	31.5	—	33	—	34.5	—	36.5	—	38
		Max. Horiz. Throw - ft.	10	44	10	45	10.5	46	11	48	11	50
AA(B)43L-AL8 AA(B)43H-AL8	D8	Capacity - GPM	2.0	2.5	3.1	3.4	4.4	4.8	6.2	6.8	8.8	9.6
		Max. Vert. Throw - ft.	—	33	—	35.5	—	38	—	40.5	—	42
		Max. Horiz. Throw - ft.	10	45	10	46	10.5	47	11	49	11	51
AA(B)43L-AL10 AA(B)43H-AL10	D10	Capacity - GPM	2.6	3.2	4.1	5.0	5.8	7.1	8.2	10	10.2	14.1
		Max. Vert. Throw - ft.	—	35	—	37.5	—	40	—	42.5	—	44.5
		Max. Horiz. Throw - ft.	10	46	10.5	49	11	50	11.5	52	12	54

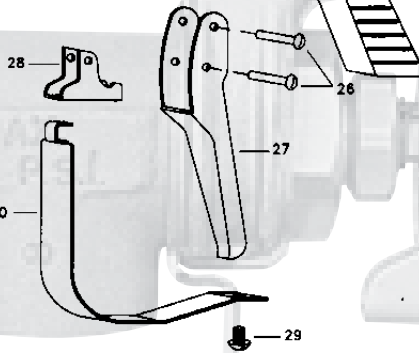
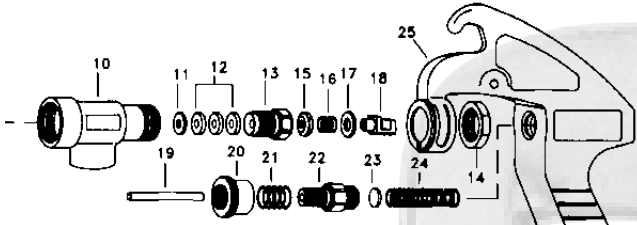
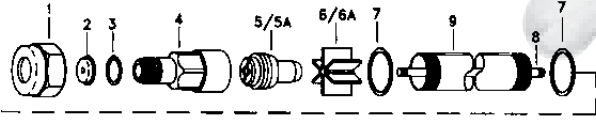
(B) = BSPT

How to order:

Specify complete GunJet spray gun number and material.
 Example: AA(B)43L-AL4 Aluminum



AA43-AL-6 Parts



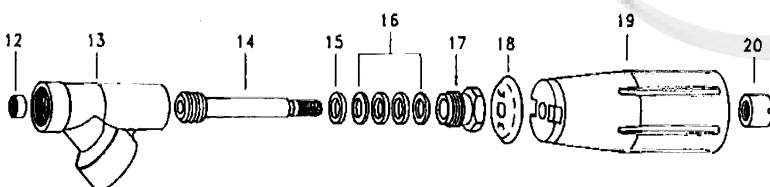
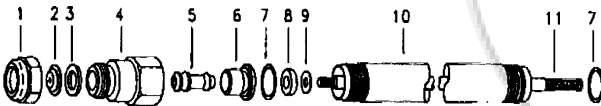
List Price
Please Apply Discount

Item#	Part#	Description	List Price
1	CP1325-AL	Cap	\$ 1.26
2	D-**	Orifice	1.44
3	CP4743-NY	Nylon Gasket	1.50
4	CP10566-AL	Nozzle Housing	17.56
5	10565-AL	Seat Plug, plate, Core	28.09
6	CP10571-3-NY	Guide Vane, Nylon	8.26
7	CP45196-NYB	Gasket, Nylon (2 Req.)	1.51
8	CP19238-416SS	Stem	23.12
9	CP6604-AL	Tubing, Barrel	37.55
10	CP6492-AL	Inlet Body	29.30
11	CP6601-302SS	Packing Washer	3.97
12	CP6602-LEA	Packing, Leather (3 Req.)	3.45
13	CP19237-AL	Packing Screw	5.01
14	CP6599-IZP	Locknut	3.37
15	CP9641-INP	Stem Nut	5.48
16	CP6595-SS	Trigger Stop Spring	2.96
17	CP7991-SS	Washer, Stainless Steel	1.14
18	CP6597-INP	Trigger Guide	15.63
19	CP6591-SS	Spring Stud	3.53
20	CP6589-IZP	Stop Adjustment Nut	4.61
21	CP6594-SS	Spring for Stop Adj. Nut	1.56
22	CP6588-IZP	Spring Screw	4.87
23	CP6592-302SS	Spring Guide Washer	2.46
24	CP6593-1-SS	Main Spring 43L	5.01
24	CP6593-2-SS	Main Spring 43H	5.01
25	CP14477-1-AL	Handle Body	54.88
26	CP7623-IZP	Rivet (2 Req.)	1.47
27	CP6509-INP	Trigger	5.91
28	CP6510-INP	Trigger Stop	5.18
29	CP11757-SS	Screw	4.05
30	CP13798-INP	Trigger Guard	10.55

REPAIR KIT Part# PK-AB43-AL-KIT \$38.61



AA18-AL6.....\$66.39 Aluminum Gunjet with 1/4" Female Pipe Thread Inlet.



REF.	PART#	DESCRIPTION	List Price
1	CP1325-AL	Cap Aluminum	1.26
2	D-__	Order by number	1.44
3	Available in kit only		
4	CP5869-AL	Spray Housing-Aluminum	6.62
5	Available in kit only		
6	CP5872-AL	Guide Sleeve-Aluminum	2.97
7	CP4143-CU	Gasket-Aluminum	1.51
8	Available in kit only		
9	Available in kit only		
10	CP5878-AL	Tubing-Aluminum	21.22
11	CP5879-AL	Stem-Aluminum	8.85
12	CP6618-AL	Nut-Aluminum	1.47
13	CP6896-AL	Inlet Body	28.90
14	CP65882-AL	Handgrip stud, nickl. plate	NA
15	CP5883-AL	Packing Washer-Aluminum	1.51
16	CP5809-LEA	Packing Leather	1.51
17	CP5811-AL	Packing Screw	3.37
18	CP5884INP	Handgrip Collar, Plated steel	7.96
19	CP5994-NY	Plastic Handgrip-Nylon	9.25
20	CP5813-AL	Handgrip nut	2.53

*PK-AB18-AL-KIT.....REPAIR KIT..... \$ 22.48

*ITEMS INCLUDED IN REPAIR KIT