

# HYPRO®



# CENTRIFUGAL PUMPS

## Hydraulically-Driven Cast Iron Series 9307

- Hydraulic motor drive (for open center, closed center and load-sensing systems)
- Port sizes: 3" NPT inlet, 2" NPT outlet  
300 x 220 universal flange (U)
- Max. fluid temperature: 140°F
- Impeller: Stainless Steel
- Motor: external gear
- Hydraulic ports: -10 SAE inlet and -12 SAE outlet
- Max. Motor PSI: 3000
- Pump seals: Life Guard silicon carbide standard
- Life Guard seals are the industry standard on OEM equipment



Part#	Inlet/Outlet	Max GPM	Max PSI	Max Hyd. GPM	List Price
9307C-GM10	3" FPT x 2" FPT	370	135	20	\$5,987.37
9307C-GM10-U	300 x220 Universal Flange	370	135	20	\$6,037.80
9307C-GM12	3" FPT x 2" FPT	370	135	23	\$5,987.37
9307C-GM10-U	300 x220 Universal Flange	370	135	23	\$6,037.80
3430-0604	Life Guard Silicon Carbide Seal Kit				\$593.64

Part#	Description	Max. RPM	Max. GPM	Max. PSI	Price
9006C-O	Cast Iron, oil lubricated, 1 3/8" PTO hub w/ locking collar & mount clips, 1 1/2" NPT inlet / 1 1/4" NPT outlet	600	117	78	\$1,364.73
9008C-O	Cast Iron, oil lubricated, 1 3/8" 1000 RPM w/ locking collar & mount clips, 1 1/2" NPT inlet / 1 1/4" NPT outlet	1000	110	75	\$1,449.83
9016C-O	Cast Iron, oil lubricated, 1" solid shaft, 1 1/2" NPT inlet / 1 1/4" NPT outlet	600	117	78	\$1,346.87
9018C-O	Cast Iron, oil lubricated, 1" solid shaft, 1 1/2" NPT inlet / 1 1/4" NPT outlet	1000	110	75	\$1,426.71
9028C-O	Cast Iron, oil lubricated, 1 3/4" - 20 spline with locking collar 7 mount clips, 1 1/2" NPT inlet / 1 1/4" outlet	1000	110	75	\$1,682.01
3430-0334	Seal and O-Ring Repair Kit				\$59.78
3430-0591	Silicon Carbide Seal Kit				\$270.05



9006C-O

PARTS BREAKDOWN ON PAGE 209

Available with Silicon Carbide Seals. Add suffix letter "B" to part number (ex: 9006C-O-B)  
Gear Driven Pump also available in Polypropylene, sub "P" of "C" (ex: 9006P-O)

CATALOG IS LIST PRICE PLEASE APPLY DISCOUNT

Part#	MAX GPM	MAX PSI	MAX RPM	SHAFT	HOUSING	PORTS	PRICE
9403C-540	140	104	600	1 3/8" hollow 6-spline	Cast Iron	1 1/2" NPT inlet 1 1/4" NPT outlet	\$1,523.37
9403C-540Q	140	104	600	1 3/8" 6-spline quick coupler	Cast Iron	1 1/2" NPT inlet 1 1/4" NPT outlet	\$1,545.43
9403C-540S	140	104	600	1" solid	Cast Iron	1 1/2" NPT inlet 1 1/4" NPT outlet	\$1,545.43
9403C-1000	140	104	1000	1 3/8" hollow 21-spline	Cast Iron	1 1/2" NPT inlet 1 1/4" NPT outlet	\$1,553.84
9403C-1000L	140	104	1000	1 3/4" hollow 20-spline	Cast Iron	1 1/2" NPT inlet 1 1/4" NPT outlet	\$1,611.62
9403C-1000S	140	104	1000	1" solid	Cast Iron	1 1/2" NPT inlet 1 1/4" NPT outlet	\$1,545.43
3430-0332				Seal and O-Ring Repair Kit			\$66.32
3430-0476				Seal, O-Ring, Belt and Gasket Repair Kit for 540 RPM Drives			\$162.98
3430-0477				Seal, O-Ring, Belt and Gasket Repair Kit for 1000 RPM Drives			\$152.28
3430-0589				Silicon Carbide Seal Kit			\$258.15
3100-0006				Poly V-Belt (540 RPM)			\$97.55
3100-0005				Poly V-Velt (1000 RPM)			\$87.14



9403C

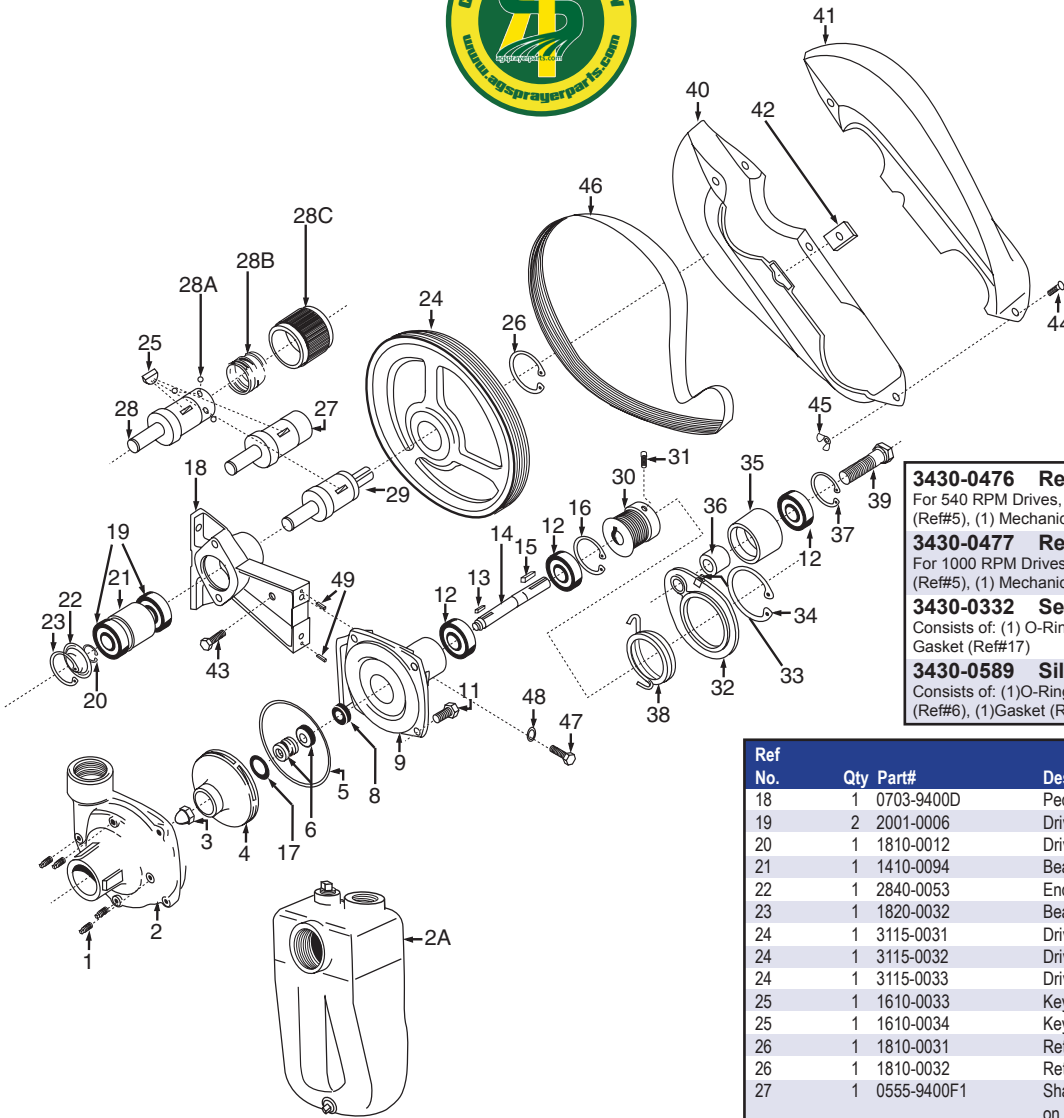
PARTS BREAKDOWN ON PAGE 210

# HYPRO®



# PUMP REPLACEMENT PARTS

**BELT DRIVEN PUMPS**  
9402C, 9403C, 9403S and 9403C-SP



**CATALOG IS LIST PRICE  
PLEASE APPLY DISCOUNT**

- 3430-0476 Repair Kit \$162.98**  
For 540 RPM Drives, consists of: (1) Poly V-Belt (Ref#46), (1) O-Ring (Ref#5), (1) Mechanical Seal, Viton (Ref#6), (1) Gasket (Ref#17)
- 3430-0477 Repair Kit \$152.28**  
For 1000 RPM Drives, consists of: (1) Poly V-Belt (Ref#46), (1) O-Ring (Ref#5), (1) Mechanical Seal, Viton (Ref#6), (1) Gasket (Ref#17)
- 3430-0332 Seal Repair Kit \$66.32**  
Consists of: (1) O-Ring (Ref#5), (1) Mechanical Seal, Viton (Ref#6), (1) Gasket (Ref#17)
- 3430-0589 Silicon Carbide Repair Kit \$258.15**  
Consists of: (1) O-Ring (Ref#5), (1) Mechanical Seal, Silicon Carbide (Ref#6), (1) Gasket (Ref#17)

Ref No.	Qty	Part#	Description	Price
1	4	2406-0016	Drain Plug - *Replaced 2406-0007	\$9.77
2	1	0150-9000C	Pump Casing (9403C)	\$267.67
2	1	0150-9000S1	Pump Casing (9403S)	\$472.29
2	1	0150-9200C	Pump Casing (9402C)	\$304.55
2A	1	3430-0480SP	Pump Casing (9403C-SP) (The above casings include a stainless steel wear ring.)	\$396.15
3	1	2253-0002	Impeller Nut	\$6.51
3	1	3430-0825	Kit, Acorn Nut SS (9403S)	\$32.86
4	1	0401-9100P	Impeller-Nylon (standard)	\$56.21
4	1	0402-9100P	Impeller-Polypropylene (9403S standard)	\$61.86
5	1	1720-0083	O-Ring	\$3.99
6	1	2120-0008	Mechanical Seal (Optional Buna-N)	\$34.09
6	1	2120-0009	Mechanical Seal - AVAIL. ONLY IN KIT-3430-0332	
6	1	3430-0589	Mechanical Seal (Opt. Silicon Carbide)	\$258.15
8	1	1410-0056	Slinger Ring	\$1.47
9	1	0750-9200C3	Mounting Flange	\$199.86
9	1	0756-9200S	Mounting Flange (9403S)	\$711.41
10	1	6031-0252	Nameplate - NOT AVAILABLE	-
11	4	2210-0020	Bolt	\$1.08
11	4	2210-0125	Bolt (9403S)	\$2.08
12	3	2000-0010	Ball Bearing	\$12.09
13	1	1610-0015	Key	\$2.08
14	1	3430-0844	Pump Shaft Kit - *Replaced 0505-9200	\$155.84
15	1	1610-0004	Key	\$2.00
16	1	1820-0013	Bearing Retainer	\$1.13
17	1	1700-0100	Gasket	\$5.53

Ref No.	Qty	Part#	Description	Price
18	1	0703-9400D	Pedestal Bracket	\$371.17
19	2	2001-0006	Driver Shaft Bearings	\$24.63
20	1	1810-0012	Driver Shaft Bearing Retainer Ring	\$2.25
21	1	1410-0094	Bearing Spacer	\$38.07
22	1	2840-0053	End Cap (label)	\$12.60
23	1	1820-0032	Bearing Bore Retaining ring	\$4.48
24	1	3115-0031	Driver Pulley (540 RPM)	\$373.55
24	1	3115-0032	Driver Pulley (1000 RPM)	\$329.53
24	1	3115-0033	Driver Pulley (1000 RPM, 1 3/4" Shaft)	\$429.46
25	1	1610-0033	Key (Driver Pulley)	\$9.03
25	1	1610-0034	Key (Driver Pulley, 1 3/4" Shaft)	\$2.52
26	1	1810-0031	Retaining Ring (Driver Pulley)	\$4.73
26	1	1810-0032	Retaining Ring (Dr. Pulley-1 3/4" Shaft)	\$10.68
27	1	0555-9400F1	Shaft - 540 RPM (3430-0207 kit used on 0555-9400F & 0556-9400F shafts)	\$458.02
27	1	0556-9400F	Shaft - 1000 RPM (3430-0207 kit used on 0555-9400F & 0556-9400F shafts)	\$580.55
27	1	0557-9400F	Shaft - 1 3/4" 1000 RPM (3430-0190 kit used on 0557-9400F shaft)	\$862.50
28	1	0555-9400F1	Shaft-540 Quick Coupler	\$458.02
28A	3	3250-0004	Locking Ball	\$1.44
28B	1	1900-0115	Collar Spring	\$22.78
28C	1	1400-0021	Collar	\$71.08
29	1	3430-0843	Shaft Kit (1" Solid) *REPLACES 0503-9400	\$214.14
30	1	3115-0034	Driven Pulley (5/8" Diameter Bore)	\$141.57
31	2	2230-0003	Set Screw for Driven Pulley	\$1.08
32	1	0706-9400C	Idle Bracket (Cast Iron Pumps)	\$107.66
33	1	2405-0003	Grease Zerk Fitting - NOT AVAILABLE	-
34	1	1810-0036	Retaining Ring (Idle Bracket, Cast Iron)	\$6.02
35	1	3115-0036	Idle Pulley	\$62.46
36	1	1410-0095	Spacer (Idle Pulley)	\$8.92
37	1	1820-0013	Retaining Ring (Idle Pulley)	\$1.41
38	1	1900-0156	Torsion Spring (Idle for Cast Iron)	\$19.96
39	1	2210-0111	Idle Bolt / Shaft	\$4.12
40	1	2840-0075	Belt Shield	\$32.86
41	1	2840-0076	Belt Shield	\$32.86
42	1	1520-0062	Bracket for Belt Shield	\$19.40
43	1	2210-0021	Attachment Bolt for Shield	\$1.10
44	4	2240-0017	Assembly Bolts for Shield	\$1.23
45	4	2252-0002	Assembly Nuts for Shield	\$1.16
46	1	3100-0006	Poly V-Belt (540 RPM)	\$97.55
46	1	3100-0005	Poly V-Belt (1000 RPM)	\$87.14
47	2	2210-0055	Bolts for Pump to Bracket	\$9.2
48	2	2260-0006	Lock Washers for Bracket Bolts	\$9.4
49	2	1600-0070	Roll Pin	\$1.10